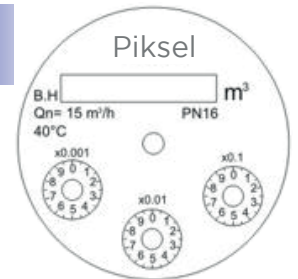


Woltman Type Water Meter

PKS-WS
(50mm-200mm)



Dial



Upon Request



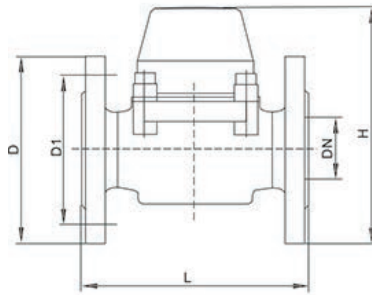
Remote transmission device can be added upon request

Pulse Output 100L/Pulse, 1000L/Pulse

Features

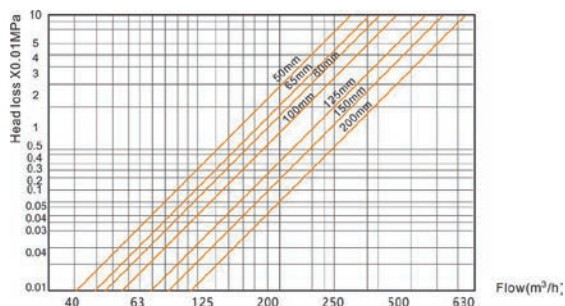
- Hermetically sealed register(IP68)
- Hydrodynamically balanced system
- Register may be rotated through 360
- High overload capability
- Pattern approved removable measuring element
- Powder coating affords max. corrosion protection
- No affected by external magnetic fields
- Available for cold water 0-30°C and hot water 30°C-90°C

Dimensions and Specifications



Model Number	PKS-WS-50		PKS-WS-65		PKS-WS-80		PKS-WS-100		PKS-WS-125		PKS-WS-150		PKS-WS-200	
Nominal Diameter(DN)(mm)	50		65		80		100		125		150		200	
Ratio Q3/Q1:	R100	R160	R100	R160	R100	R160	R100	R160	R100	R160	R100	R160	R100	R160
Overload flow rate(Q4) [m³/h]	50	78,75	78,75	78,75	125	125	200	200	200	312,5	500	500	787,5	787,5
Permanent flow rate(Q4) [m³/h]	40	40	63	63	100	100	160	160	250	250	400	400	630	630
Transitional flow rate(Q4) [m³/h]	0,64	0,63	1,008	0,63	1,6	1	2,56	1,6	2,56	2,5	6,4	4	6,4	4
Minimum flow rate(Q4) [m³/h]	0,4	0,394	0,63	0,394	1	0,625	1,6	1	1,6	1,5625	4	2,5	6,3	3,9375
Accuracy class:	2													
Maximum permissible error for the lower flow rate zone (MPE _l):	±5%													
Maximum permissible error for the upper flow rate zone (MPE _u):	±2% for water having a temperature ≤30°C ±3% for water having a temperature >30°C													
Temperature class:	T30 and T50													
Water pressure classes:	MAP 16													
Pressure-loss classes:	ΔP40													
Indicating range[m³]:	999999													
Resolution of the indicating device[m³]:	0.0005													
Flow profile sensitivity classes:	U10 D5													
Orientation limitation:	YES													
Connection Thread:	Flange connecting													
L (mm)	200	200	225	250	250	300	300							
H (mm)	200	208	245	245	275	350	370							
W (mm)	165	185	200	200	220	285	347							
D (mm)	160	180	195	215	245	285	340							
D1 (mm)	125	145	160	180	210	240	295							
Connection bolt(pcs.)	4xM16	4xM16	8xM16	8xM16	8xM16	8xM20	12xM20							
Weight:	8.00	9.50	14.50	16.80	20.00	36.00	44.50							

Head loss Curve



Error Curve

