

Multi-Jet Dry Type Water Meter

PKS-MJC

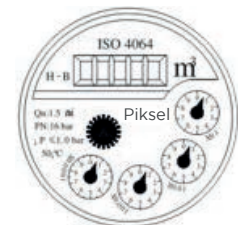
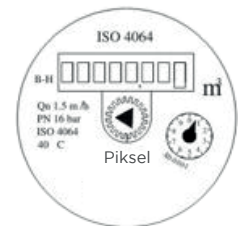
Multi jet, dry dial, vacuum sealed register, frost resistant, keeps clear reading for long time. Magnetic transmission. Produced in the versions for cold water (30°C) and hot water (90°C) in the diameters 15 to 50 mm. Long durability and elevated precision guaranteed. Remote transmission device can be added upon request Pulse output 10L/Pulse, 100L/Pulse



Body Options



Dials



Features

- Dry-dial, magnetic drive, protected against external magnetic tampering,
- Vacuum sealed register, Frost resistant, keeps clear reading for long time,
- Brass body, cast iron body or plastic body, optional,
- Internal or external adjusting device, optional,
- The meters conform to ISO 4064 Standard Class B.

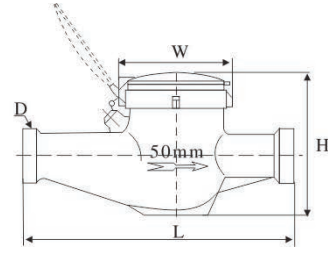
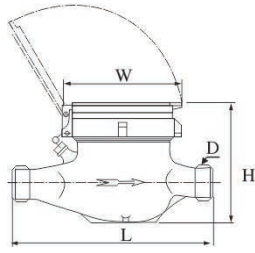
Working Condition

- Water temperature $\leq 30^{\circ}\text{C}$; hot water meter 90°C
- Water pressure $\leq 1\text{MPa}$, (PN: 1.6MPa/16bar)
- $\Delta 0.1\text{MPa}$

Accuracy

- From minimum flow-rate(q_{\min}) inclusive, to transitional flow-rate(q_t) inclusive
- From transitional flow-rate(q_t) inclusive, to overload flow-rate(q_s) exclusive: 32%, (Hot water meter: 33%)

Dimension

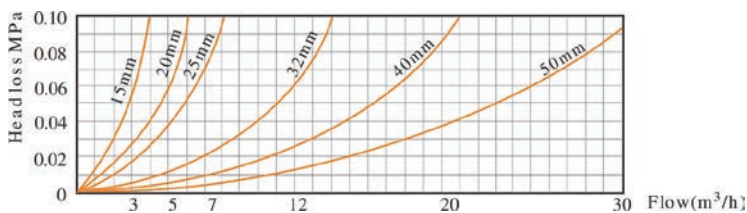


Type	Size (mm)	Lenght (mm) L	Width (mm) w	Height (mm) H	Connenting Thread D
PKS-MJC-15	15	165	99	104	G3/4"B
PKS-MJC-20	20	195/190	99	106	G1"B
PKS-MJC-25	25	225/260	104	120	G1 1/4"B
PKS-MJC-32	32	230/260	104	120	G1 1/2"B
PKS-MJC-40	40	245/300	120	155	G2"B
PKS-MJC-50	50	280/300	125	155	G2 1/2"B

Mechanic Tecnichal Data

Nominal Size DN(mm)	Class of measurement	Overload Flow-rate $q_s(m^3/h)$	Permanent Flow-rate $q_p(m^3/h)$	Transitional Flow-rate $q_t(l/h)$	Minimum Flow-rate $q_{min}(l/h)$
15	B	3	1.5	120	30
20	B	5	2.5	200	50
25	B	7	3.5	280	70
32	B	12	6.0	480	120
40	B	20	10	800	200
50	B	30	15	3000	450

Head loss Curve



Error Curve

