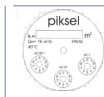


## PKS WOLTMAN WATER METER



**PKS-50E4a**  
(50mm-200mm)

### Dial



### Option



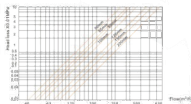
### Upon request :

Remote transmission device can be upon request  
Pulse output 100L/Pulse, 1000L/Pulse

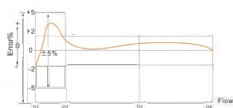
### Features:

- Hermetically sealed register (IP 68)
- Hydrodynamically balanced system
- Register may be rotated through 360°
- High overload capability
- Pattern approved removable measuring element
- Powder coating affords max. corrosion protection
- Not affected by external magnetic fields
- Available for cold water 0-30°C and of water 30°C-90°C

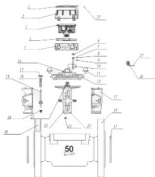
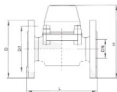
### Head Loss Curve:



### Error Curve



## Dimension:



1	Cover
2	Upper Lower
3	Register
4	Plater
5	Low Lower
6	Adjusting Screw
7	Adjusting shaft
8	G-Ring
9	Ring
10	Adjusting Wing
11	Screw
12	Flange Cover
13	Rectifier base inlet
14	Water Body
15	Ring
16	Bush Insert
17	Spiral Gear
18	Upper Bush
19	Spiral Gear
20	Low Bush
21	Central Gear
22	Central Frame
23	Choke Ball
24	Yarn Wheel Base
25	Inserted Pin
26	Lead Seal
27	Wing
28	Name Plate

Model Number	PKS-50E4a		PKS-65E4a		PKS-80E4a		PKS-100E4a		PKS-125E4a		PKS-150E4a		PKS-200E4a	
Nominal diameter (DN) (mm)	50		65		80		100		125		150		200	
Ratio Q3/Q1	R100	R160	R100	R160	R100	R160	R100	R160	R100	R160	R100	R160	R100	R160
Overload flow rate (Q4) (m <sup>3</sup> /h)	50	78.75	78.75	78.75	125	125	200	200	200	312.5	500	500	787.5	787.5
Permanent flow rate (Q3) (m <sup>3</sup> /h)	40	40	63	63	100	100	160	160	250	250	400	400	630	630
Transitional flow rate (Q2) (m <sup>3</sup> /h)	0.64	0.63	1.008	0.63	1.6	1	2.56	1.6	2.56	2.5	6.4	4	10.00	6.3
Minimum flow rate (Q1) (m <sup>3</sup> /h)	0.4	0.394	0.63	0.394	1	0.625	1.6	1	1.6	3.9625	4	2.6	6.3	3.9375
Accuracy class	2													
Maximum permissible error for the linear flow rate zone (MPE <sub>L</sub> )	+3%													
Maximum permissible error for the upper flow rate zone (MPE <sub>U</sub> )	±2% for water having a temperature > 30°C ±2% for water having a temperature ≤ 30°C													
Temperature class:	T30 and T50													
Water pressure classes:	PN16													
Pressure-loss classes:	DPA0													
Indicating range (m3):	999999													
Resolution of the indicating device (m3)	0.0005													
Flow profile sensitivity classes:	U10 D5													
Orientation limitation:	YES													
Connection Thread:	Flange connecting													
L	mm	200	200	225		250		250		300		300		350
H	mm	200	208	245		245		275		350		350		370
W	mm	165	185	200		200		220		205		205		247
D	mm	160	180	195		215		245		205		205		240
D1	mm	125	145	160		180		210		240		240		285
Connecting bolt (pcs)		4*M16	4*M16	8*M16		8*M16		8*M16		8*M20		8*M20		12*M20
Weight		8.00	9.50	14.50		16.80		20.00		26.00		26.00		44.50